

Newberry Caldera

Caldera Visitor Services

Paulina Visitor Center June 23 - September 25
 Open Thursday - Sunday* 9:00am-5:00pm
 *also Monday July 4 and Monday September 5
 Offers DYNW bookstore, maps, and information.

Ranger Talks Thursday - Sunday

Big Obsidian Flow Talk 9:30am & 3:00pm

Guided tour of Oregon's youngest lava flow. Learn about the prehistoric and modern uses of this highly prized volcanic glass.

Paulina Peak 11:30am & 1:00pm

Join a ranger at the highest point in the Monument to learn about Newberry's volcanic history and potential future.

Campfire Talks 8:30pm

FRIDAY evenings at Cinder Hill Campground, East Lake
 SATURDAY evenings at Paulina Lake Campground, Paulina Lake

Sleep On a Volcano!

Camping in Newberry Caldera is managed by Hoodoo Recreation. Find out about camping options by contacting Hoodoo directly at:



Hoodoo Recreation
www.hoodoo.com
Reservations: (877) 444-6777
Information: (541) 338-7869

Lodging in Newberry Caldera is offered by the following businesses:

East Lake Resort
www.eastlakeresort.com
 541-536-2230

Paulina Lake Lodge:
www.paulinalakelodge.com
 541-536-2240

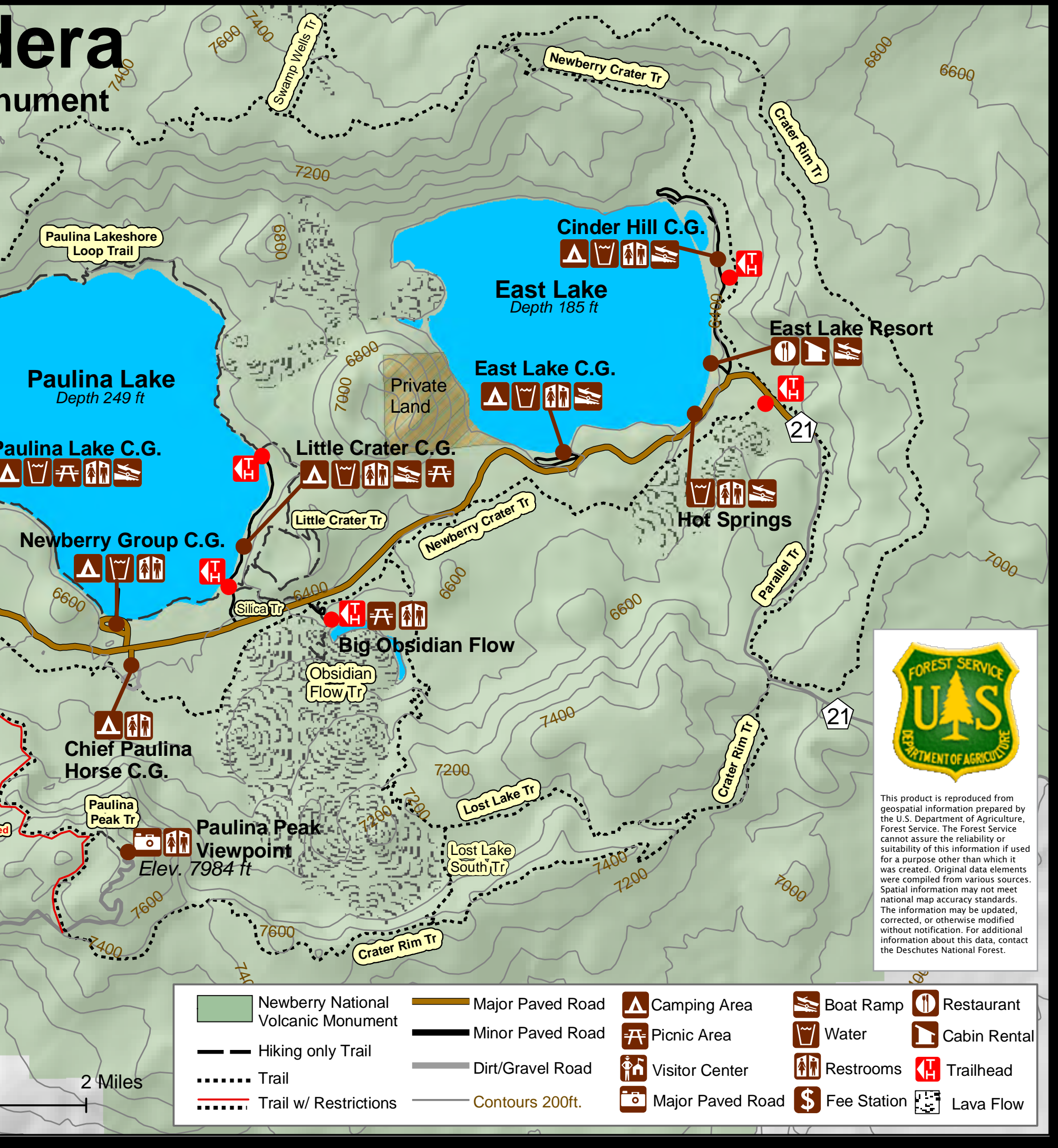
All Newberry Caldera trails are *Non-Motorized*.
Please control and clean up after your dog.



Newberry Caldera Trails	Miles One Way	Elev Change	Use	Difficulty
Crater Rim Trail #3957	20	6330-7600 feet	hike,bike,horse	difficult
Obsidian Flow Trail # 3958.1	0.5	6330-6850 feet	hike only	easy
Little Crater Trail # 3953	1.5	6330-6850 feet	hike only	moderate
Little Crater Tie	0.6		hike only	moderate
Lost Lake Trail # 3958.2/3958.4	3.9 + 0.6	7100-7440 feet	hike, bike, horse	difficult
Newberry Crater Trail #3958	9.2	6350-7300 feet	hike, bike, horse	moderate



Caldera Monument

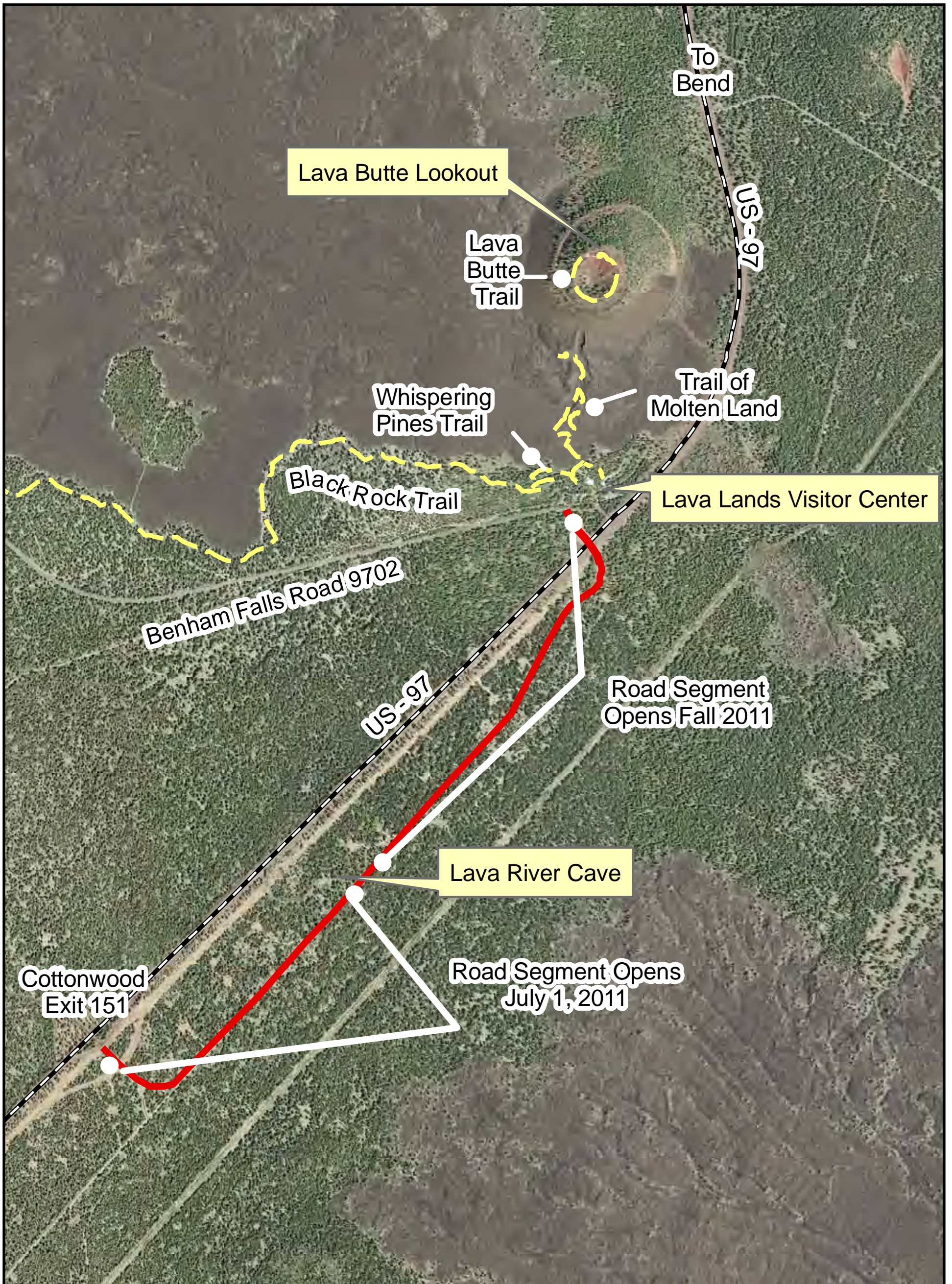



This product is reproduced from geospatial information prepared by the U.S. Department of Agriculture, Forest Service. The Forest Service cannot assure the reliability or suitability of this information if used for a purpose other than which it was created. Original data elements were compiled from various sources. Spatial information may not meet national map accuracy standards. The information may be updated, corrected, or otherwise modified without notification. For additional information about this data, contact the Deschutes National Forest.

Newberry National Volcanic Monument	Major Paved Road	Camping Area	Boat Ramp	Restaurant
Hiking only Trail	Minor Paved Road	Picnic Area	Water	Cabin Rental
Trail	Dirt/Gravel Road	Visitor Center	Restrooms	Trailhead
Trail w/ Restrictions	Contours 200ft.	Major Paved Road	Fee Station	Lava Flow

Newberry Caldera Trails	Miles One Way	Elev Change	Use	Difficulty
Parallel Trail #3958.3	2	6450-7000 feet	hike, bike, horse	moderate
Paulina Falls Trail #3957	0.5	6120-6280 feet	hike only	easy
Paulina Lakeshore Loop #3955	7.5	6330-6560 feet	hike only	moderate
Paulina Peak Trail #3957	0.25		hike only	moderate
Peter Skene Ogden Trail # 3956	8.6	4300-6350 feet	hike, horse, bike	moderate
Silica Trail # 3958.5	0.5	6350-6365 feet	hike only	moderate

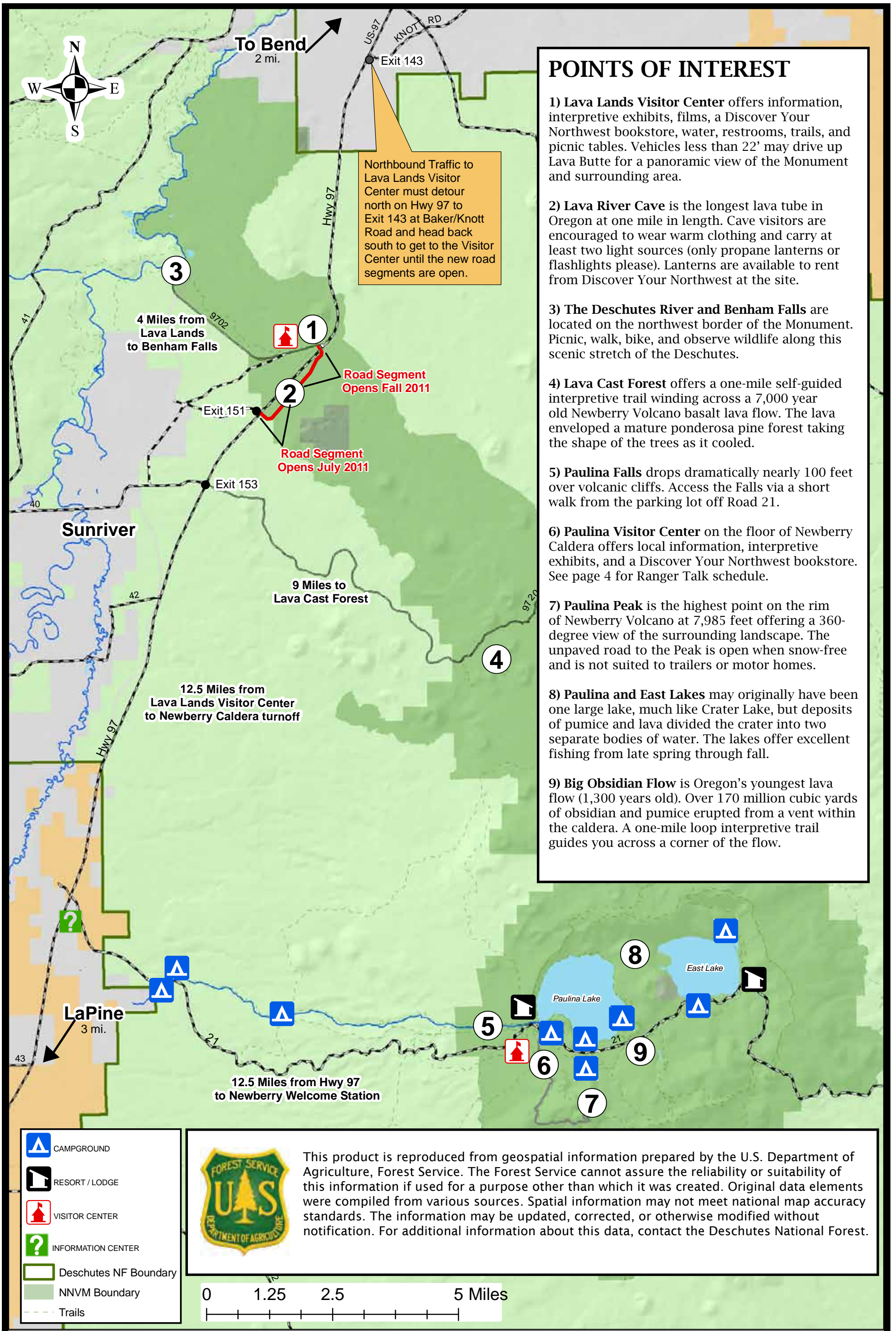
Lava Lands and Lava River Cave



This product is reproduced from geospatial information prepared by the U.S. Department of Agriculture, Forest Service. The Forest Service cannot assure the reliability or suitability of this information if used for a purpose other than which it was created. Original data elements were compiled from various sources. Spatial information may not meet national map accuracy standards. The information may be updated, corrected, or otherwise modified without notification. For additional information about this data, contact the Deschutes National Forest.



Newberry National Volcanic Monument



POINTS OF INTEREST

- 1) **Lava Lands Visitor Center** offers information, interpretive exhibits, films, a Discover Your Northwest bookstore, water, restrooms, trails, and picnic tables. Vehicles less than 22' may drive up Lava Butte for a panoramic view of the Monument and surrounding area.
- 2) **Lava River Cave** is the longest lava tube in Oregon at one mile in length. Cave visitors are encouraged to wear warm clothing and carry at least two light sources (only propane lanterns or flashlights please). Lanterns are available to rent from Discover Your Northwest at the site.
- 3) **The Deschutes River and Benham Falls** are located on the northwest border of the Monument. Picnic, walk, bike, and observe wildlife along this scenic stretch of the Deschutes.
- 4) **Lava Cast Forest** offers a one-mile self-guided interpretive trail winding across a 7,000 year old Newberry Volcano basalt lava flow. The lava enveloped a mature ponderosa pine forest taking the shape of the trees as it cooled.
- 5) **Paulina Falls** drops dramatically nearly 100 feet over volcanic cliffs. Access the Falls via a short walk from the parking lot off Road 21.
- 6) **Paulina Visitor Center** on the floor of Newberry Caldera offers local information, interpretive exhibits, and a Discover Your Northwest bookstore. See page 4 for Ranger Talk schedule.
- 7) **Paulina Peak** is the highest point on the rim of Newberry Volcano at 7,985 feet offering a 360-degree view of the surrounding landscape. The unpaved road to the Peak is open when snow-free and is not suited to trailers or motor homes.
- 8) **Paulina and East Lakes** may originally have been one large lake, much like Crater Lake, but deposits of pumice and lava divided the crater into two separate bodies of water. The lakes offer excellent fishing from late spring through fall.
- 9) **Big Obsidian Flow** is Oregon's youngest lava flow (1,300 years old). Over 170 million cubic yards of obsidian and pumice erupted from a vent within the caldera. A one-mile loop interpretive trail guides you across a corner of the flow.

Northbound Traffic to Lava Lands Visitor Center must detour north on Hwy 97 to Exit 143 at Baker/Knott Road and head back south to get to the Visitor Center until the new road segments are open.

Road Segment Opens Fall 2011

Road Segment Opens July 2011

4 Miles from Lava Lands to Benham Falls

9 Miles to Lava Cast Forest

12.5 Miles from Lava Lands Visitor Center to Newberry Caldera turnoff

12.5 Miles from Hwy 97 to Newberry Welcome Station

Sunriver

LaPine 3 mi.

To Bend 2 mi.



- CAMPGROUND
- RESORT / LODGE
- VISITOR CENTER
- INFORMATION CENTER
- Deschutes NF Boundary
- NNVM Boundary
- Trails



This product is reproduced from geospatial information prepared by the U.S. Department of Agriculture, Forest Service. The Forest Service cannot assure the reliability or suitability of this information if used for a purpose other than which it was created. Original data elements were compiled from various sources. Spatial information may not meet national map accuracy standards. The information may be updated, corrected, or otherwise modified without notification. For additional information about this data, contact the Deschutes National Forest.

